



mygeoworld.com

MyGeoPlayer
GIS Edition



PRECISION
UP-TO-DATE IMAGERY
TECHNOLOGIES
DATA HOSTING
TURN-KEY SOLUTIONS



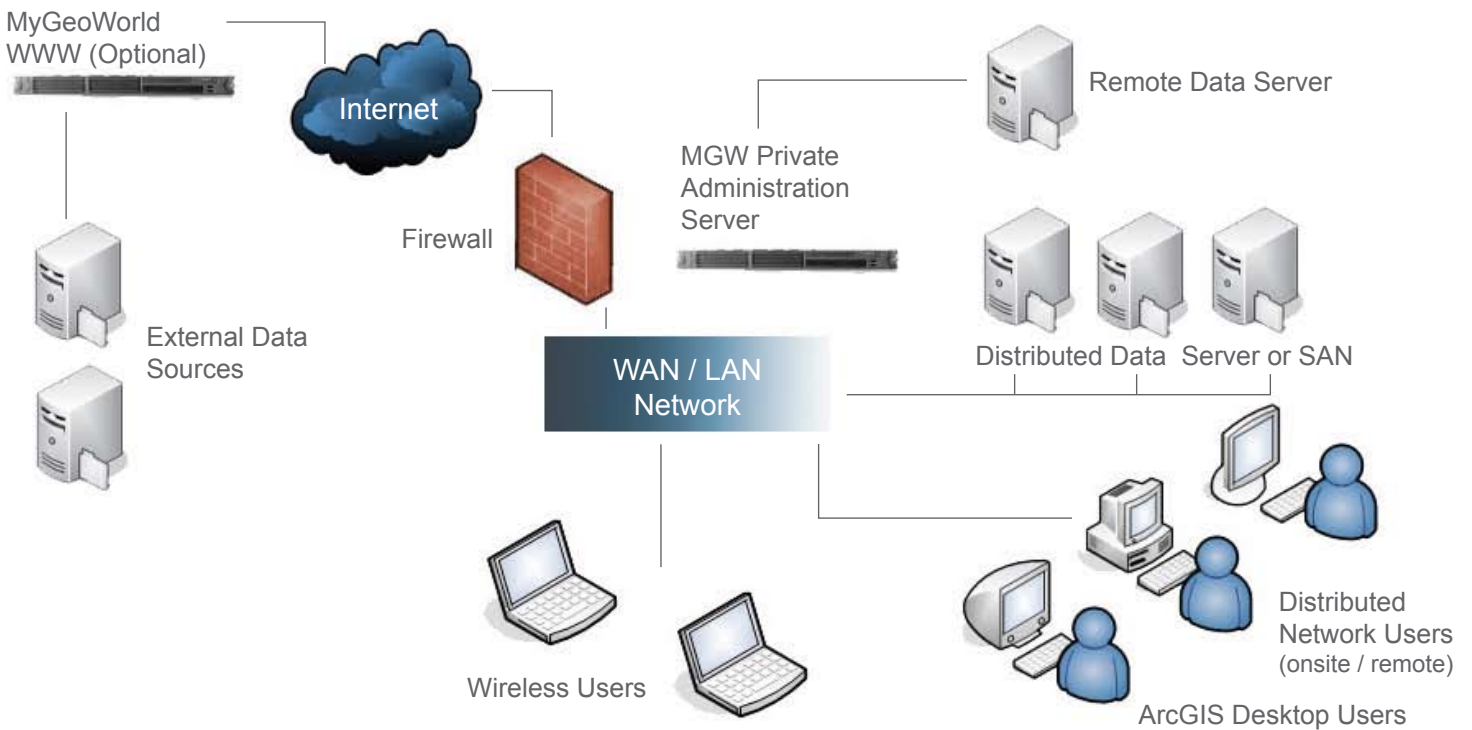
GENERAL OVERVIEW

Streamline data into your local GIS and add the powerful features of stereoscopic viewing and navigation. Control and distribute data to different user groups no matter where they are located geographically.

MyGeoPlayer Plug-in GIS Edition, was designed and developed to allow GIS desktop users to easily access and efficiently use 2D/3D imagery either from a local or remote source. Simply connect to imagery collections and then benefit from the use of your editing and extraction tools available within your local GIS software.

With the addition of MyGeoPlayer Plug-in, GIS users and managers can now easily create, manage and update GIS data.

MyGeoPlayer Remote Edition facilitates the enterprise use of geospatial data. All users may now have access to high-precision data in order to streamline data-sharing and benefit from quality derivative products including the precision of powerful features.



PRECISION UP-TO-DATE IMAGERY TECHNOLOGIES DATA HOSTING TURN-KEY SOLUTIONS

Q&A TECHNOLOGY TIPS

Q1: Does your organization require distribution of geospatial data to different user groups across multiple departments or locations?

A1: With the use of a unique ID, MyGeoWorld provides a secured access to users from any location in the world. Access to important, high-precision and up-to-date geospatial data is possible in a matter of seconds from any department or location. Sharing up-to-date data in real time amongst groups no matter where they are located geographically has never been easier. All you need to remember is www.mygeoworld.com., your user name and password, and go from there.

Q2: Are you maximizing your GIS platform at the enterprise level?

A2: Quick and easy access to important geospatial data is key in ensuring expedient operations throughout your organization. Improve productivity, save time, energy and money by reducing field trips to gather precise data. MyGeoPlayer facilitates the integration of geospatial information into your daily workflow.



All the benefits of your local GIS software tools plus access to up-to-date and high-precision geospatial data collections

ACCESS TO REMOTE DATA

- Easy access to remote geospatial imagery and data collections through a secured web portal
- Centralized data that can be shared amongst various user types in different locations

ACCESS TO LOCAL DATA

- No connection to internet or intranet required
- Access to geospatial data that resides on local servers can be opened and viewed

FUNCTIONALITIES

- Synchronize views
- View vector features super-imposed over imagery view
- Control cursor in XYZ
- Variable and Fixed cursor modes
- Modify & edit existing features
- Place 2D features at 3D cursor position (used in Stereoscopic mode)
- Full stereoscopic modes (Anaglyph, mirror stereoscope, stereo-ready viewing devices (Shutter glasses, True3Di, Planar, etc.))
- Connection to server requires MyGeoWorld user account



sales@mygeoworld.com

SYSTEM REQUIREMENTS

Optimum

Pentium IV Duo Core
or higher
Windows XP SP2
2 GB RAM or higher
2 Monitors
Wheel-Mouse
Internet connection (DSL
or higher)

Minimum

Pentium IV or higher
Windows XP SP2
1 GB RAM
1 Monitor
Wheel-Mouse
Internet connection
(DSL or higher)

Proud realization of:



Corporate Headquarters

607, 6^e avenue de l'Aéroport
Québec (Québec) G2G 2T4
Canada

sales@groupealta.com

T: 418.667.1913
877.506.1913
F: 418.266.3114

www.groupealta.com