



# Settlement Analysis in Geotechnical Engineering: Principles, Methods, and Practical Pitfalls

## Part - 2

### Important Notes



## Recap of Part 1 (Already Published)

In Part 1, Settlement Analysis in Geotechnical Engineering: Principles, Methods, and Practical Pitfalls, covering:

- What is Settlement?
- Types of Settlement
- Stress Increase in Soil Due to Foundations
- Settlement Analysis Methods
- Differential Settlement - The Real Danger
- Allowable Settlement Limits (Typical Values)

## What We Will Cover in Part 2

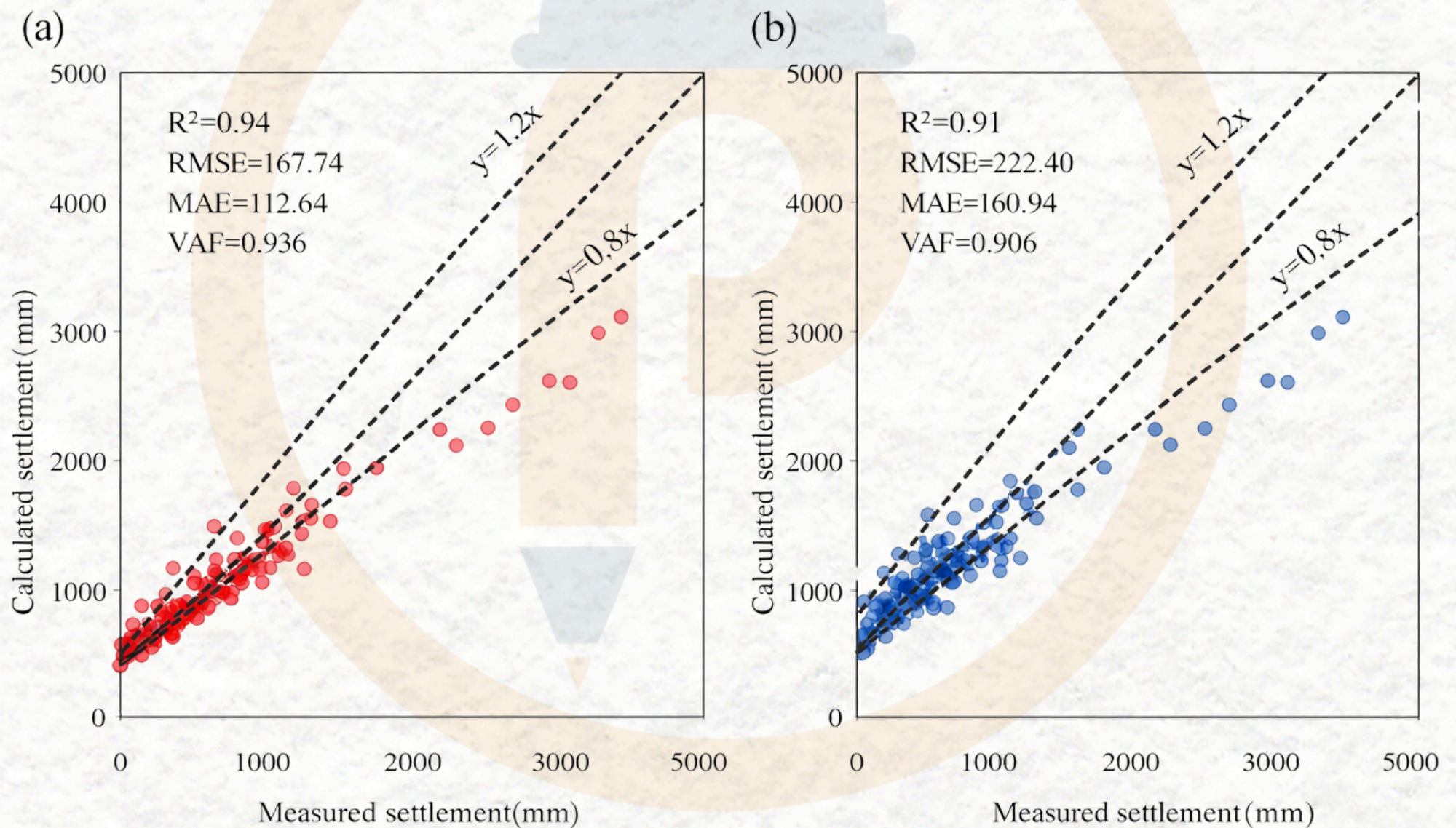
In this slide we will cover the remaining sections:

- Practical Pitfalls in Settlement Analysis
- Settlement Control and Mitigation Measures
- Why Settlement Analysis Still Fails in Practice

## 8. Practical Pitfalls in Settlement Analysis

### 8.1 Over-Reliance on Lab Parameters

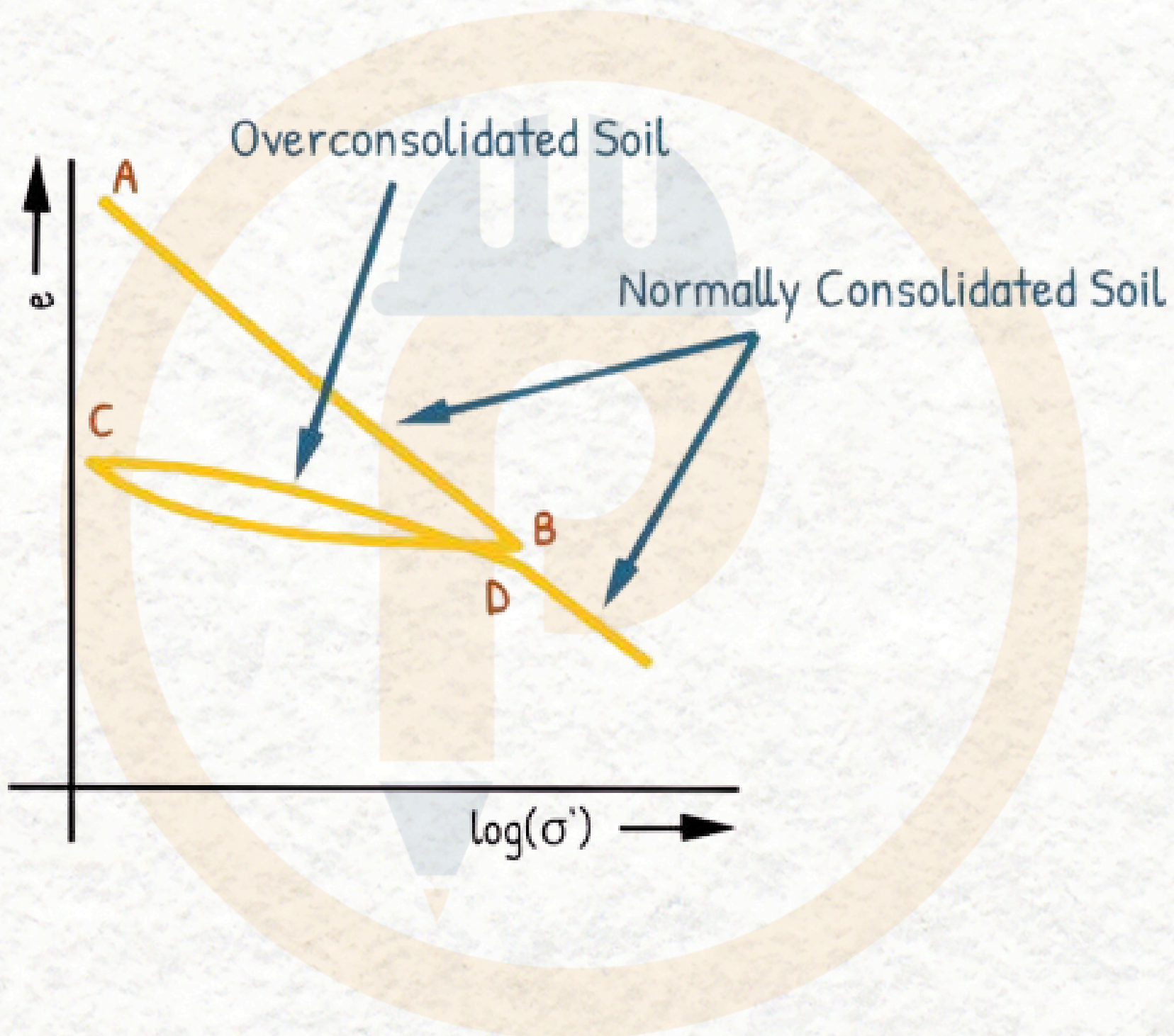
- Lab samples may not represent field conditions
- Disturbance affects compressibility values



**Figure -Figure** - Study on settlement prediction of soft ground NATURE

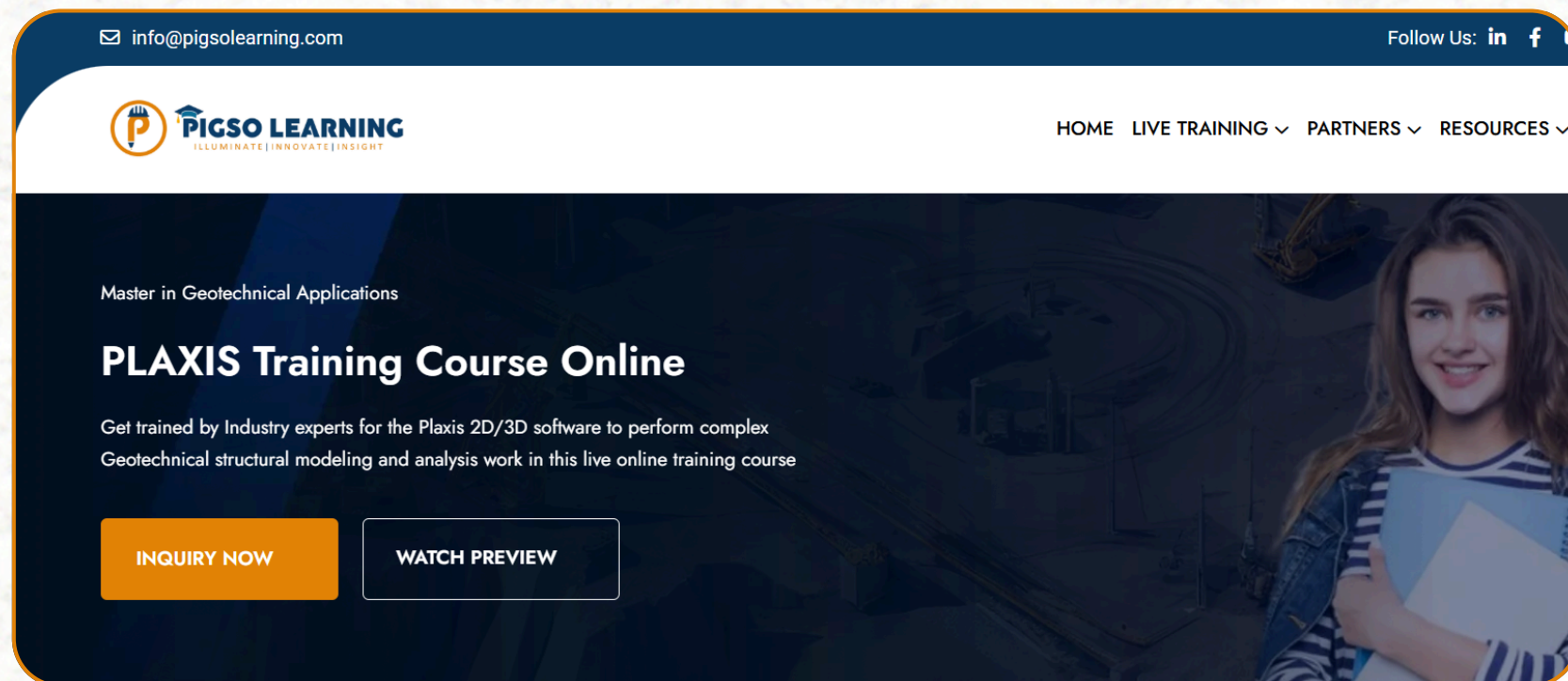
## 8.2 Ignoring Stress History

- Overconsolidated vs normally consolidated soil
- Settlement overestimated if OCR is ignored



**Figure - Stress History of Soil** ELEMENTARY ENGINEERING

**Struggling with errors or delays in PLAXIS? You're not alone - and we've built a step-by-step way out.**



PIGSO LEARNING offers hands-on training on PLAXIS Software,

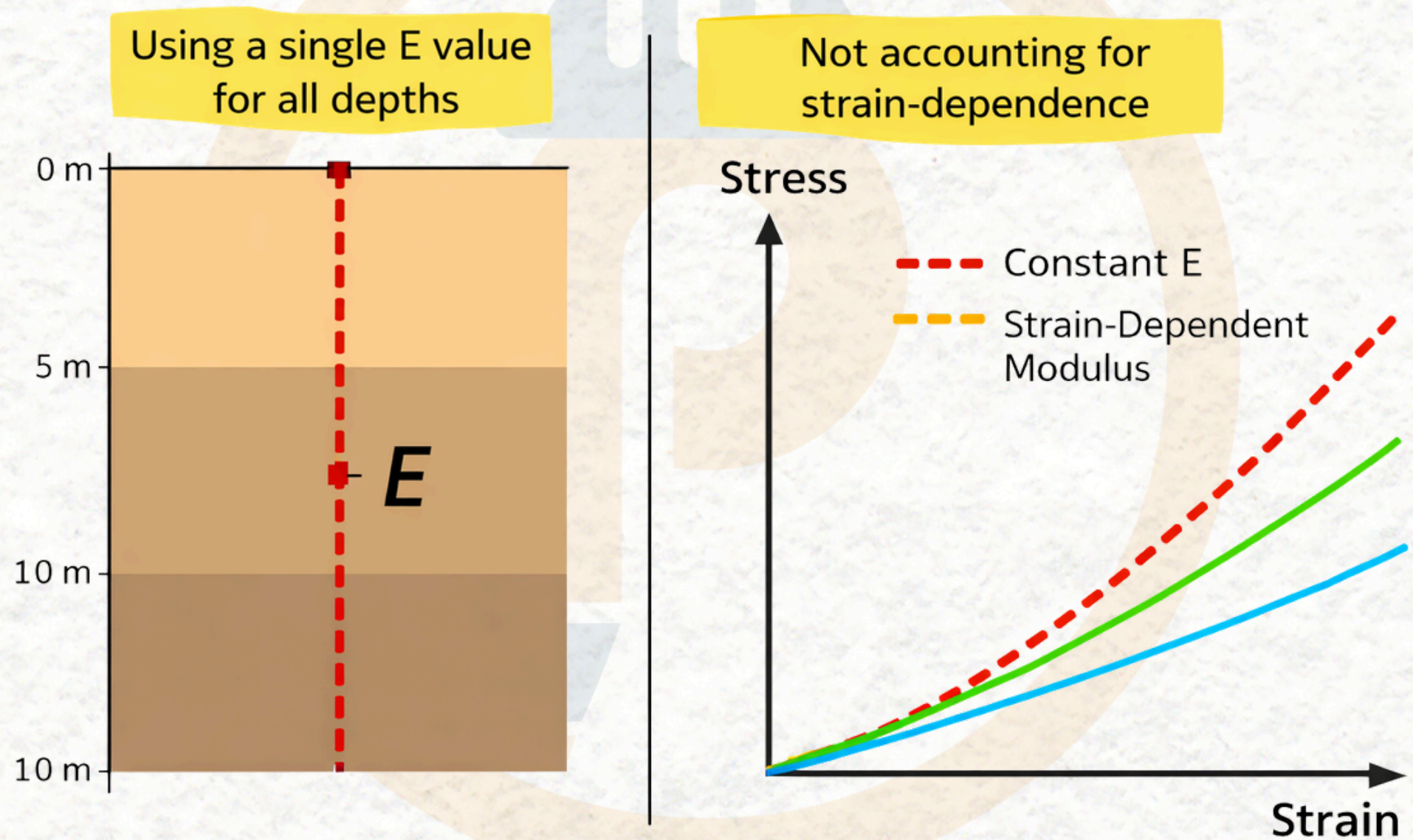
**470+ engineers skilled with PLAXIS**

**We offer,**

- Live online classes with experts (15+ years experience)
- Real project assignments & case studies
- Downloadable materials + recorded sessions
- Professional certification to boost your career

### 8.3 Incorrect Modulus Selection

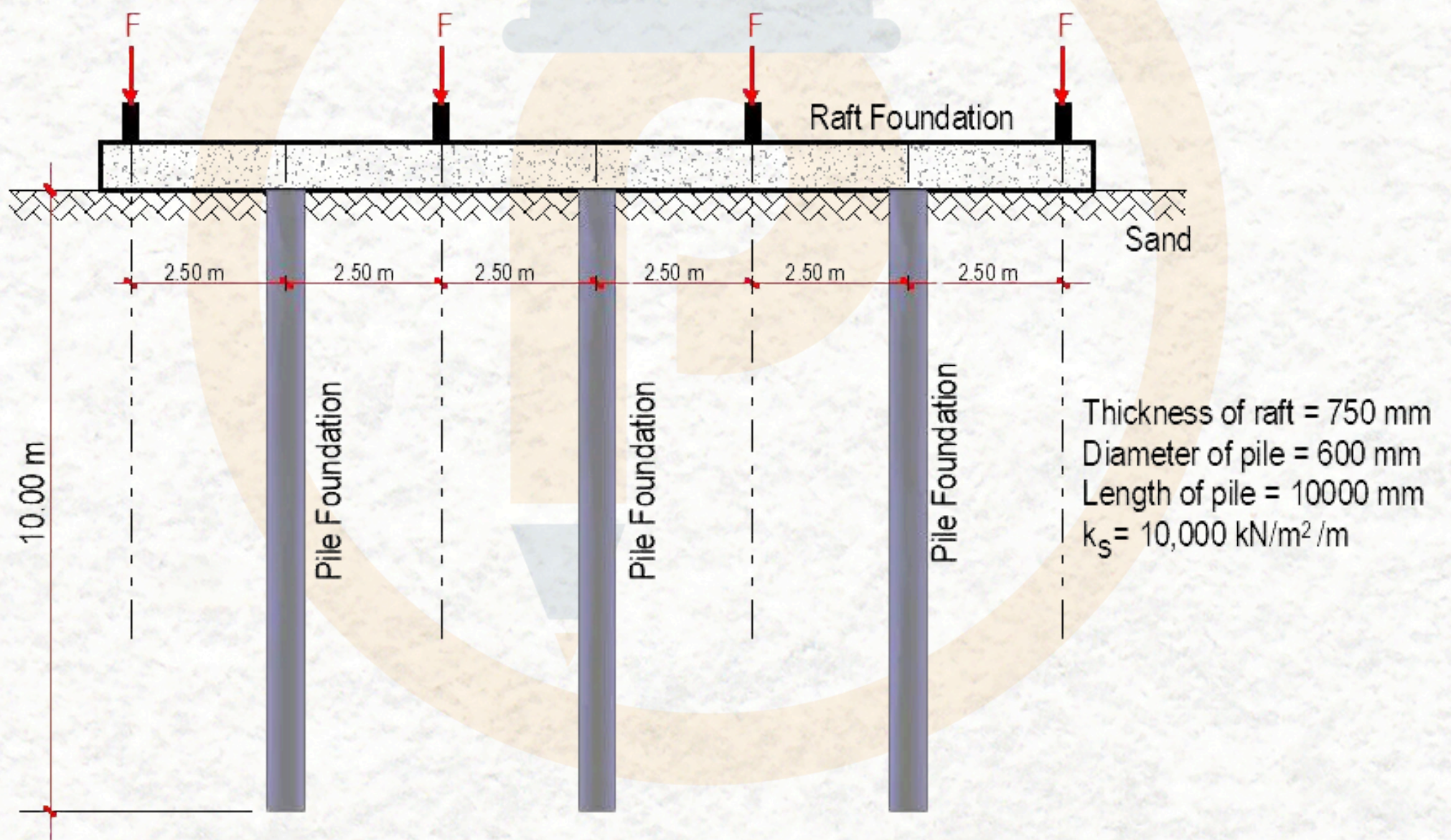
- Using a single  $E$  value for all depths
- Not accounting for strain dependence



**Figure** - Incorrect modulus selection in soil mechanics

## 9. Settlement Control and Mitigation Measures

- Raft foundations
- Pile-supported rafts
- Preloading and surcharge
- Vertical drains
- Ground improvement techniques



**Figure - Design of Piled Raft Foundations** STRUCTVILLE

## 10. Why Settlement Analysis Still Fails in Practice

Despite advanced tools, failures occur due to:

- Poor site investigation
- Simplified assumptions
- Lack of monitoring
- Design–construction mismatch

Settlement analysis is not just a calculation exercise—it is engineering judgment applied to uncertain ground conditions.

## 11. Key Takeaways

- Settlement usually governs foundation design
- Differential settlement is more critical than total settlement
- Simple methods are useful but must be used carefully
- Understanding soil behavior matters more than complex equations

## Thanks for growing your skills with PIGSO LEARNING!

Follow us for more technical tips, expert insights, and real-world geotechnical guidance.

Drop a comment if you like this post, and suggest topics you'd like us to cover next.

**Got feedback or want to connect? We'd love to hear from you!**

**— Team PIGSO LEARNING**

**Connect with PIGSO LEARNING**

